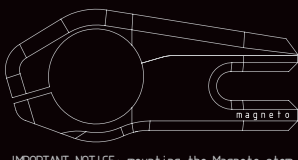


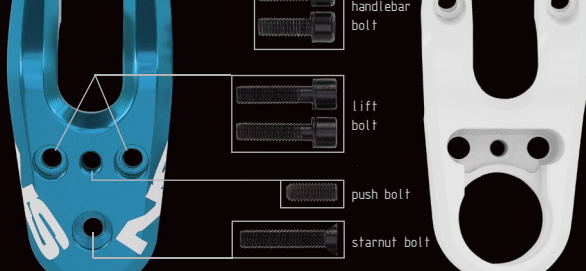
# NS BIKES MAGNETO INSTRUCTION SHEET



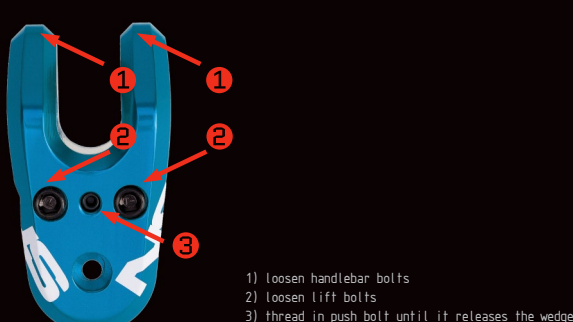
**IMPORTANT NOTICE:** mounting the Magneto stem requires a certain degree of technical proficiency. If you have any doubts during mounting process, or do not feel comfortable with working on your bicycle ask a professional bicycle workshop to mount the stem for you. Even if you think you know everything about bikes, you **MUST** read the mounting and dismounting procedures, because this stem is unlike anything else on the market.

**! IMPROPER INSTALATION OF THIS PRODUCT CAN RESULT IN SERIOUS INJURY OR DEATH!**

## BOLTS IDENTIFICATION

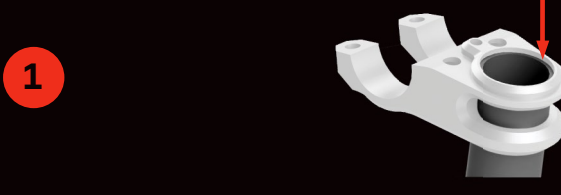


## REMOVING STEM



## ASSEMBLY MANUAL

**STEP 1:** adjust steer tube length with spacers or by cutting the tube then mount starnut in steer tube.

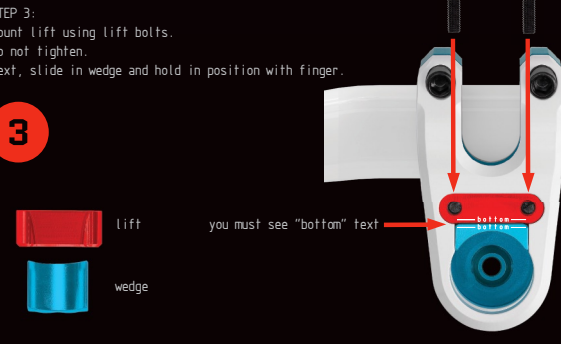


**! IMPORTANT SAFETY INFORMATION:** steering tube stack over the headset & spacers: MIN 26mm , MAX 27mm

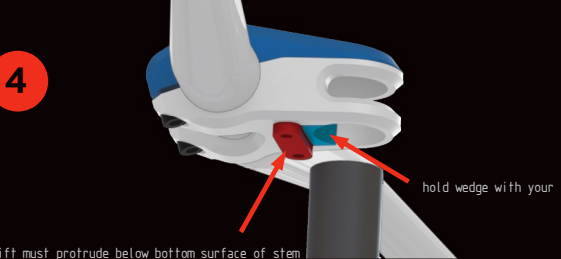
**STEP 2:** mount handlebar in stem, mount top part of stem, thread in handlebar bolts loosely.



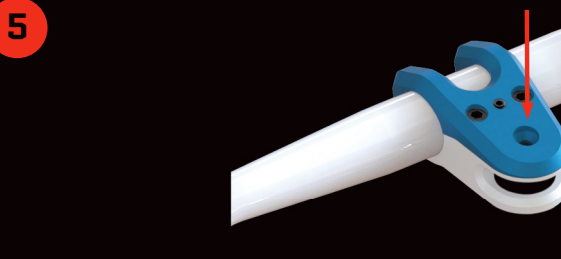
**STEP 3:** mount lift using lift bolts. Do not tighten. Next, slide in wedge and hold in position with finger.



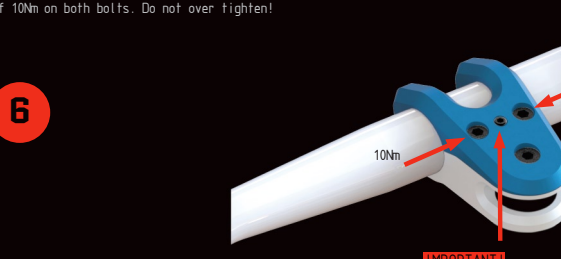
**STEP 4:** slide stem onto steer tube.



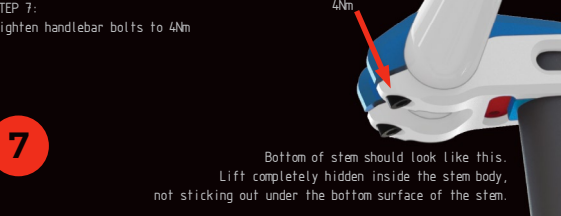
**STEP 5:**  
a/ mount starnut bolt  
b/ adjust handlebar position and slightly tighten handlebar bolts (just enough to keep bar in position),  
c/ firmly tighten starnut bolt,  
d/ adjust alignment of stem with front wheel



**STEP 6:** tighten lift bolts alternately, half a turn at a time, until you achieve torque of 10Nm on both bolts. Do not over tighten!



**STEP 7:** tighten handlebar bolts to 4Nm



**! IMPORTANT SAFETY INFORMATION:** After installation, stand in front of the bicycle, put front wheel between your knees, grab handlebar and pull sharply in each direction to check if stem is firmly secured to fork steer tube. Do not ride if you are not sure that the installation process has been done correctly.