



NS
BIKES

soda



- 3 Warnings and important information
- 4 General riding information
- 5 Introduction
- 6 Overview of product line
- 7 Frame concept & information: SODA EVO
- 8 Frame concept & information: SODA SLOPE
- 9 Technical sheet: SODA EVO
- 10 Technical sheet: SODA SLOPE
- 11 Replacement parts: SODA EVO
- 13 Replacement parts: SODA SLOPE
- 18 Instructions: general info
- 19 Instructions: suspension settings
- 20 Instructions: SODA EVO rear wheel mounting
- 21 Instructions: SODA EVO cs lenght adjust
- 23 Instructions: SODA SLOPE rear wheel mounting
- 24 Instructions: SODA EVO travel adjust
- 25 Instructions: SODA SLOPE BB assembly
- 26 Instructions: SODA EVO / SODA SLOPE external cable routing
- 27 Instructions: SODA EVO internal cable routing
- 30 Tightening torque
- 31 Maintenance: pre-ride & periodical checks
- 32 Box contents: SODA EVO
- 32 Box contents: SODA SLOPE
- 33 Proof of purchase - warranty card
- 34 NS BIKES warranty

**SAM PILGRIM
2013 FMB TOUR
WINNER**



WARNINGS AND IMPORTANT INFORMATION

ATTENTION: Please read this manual carefully. It contains important safety information!

WARNING: Extreme riding is a very dangerous sport; it requires an amazing amount of skill. By engaging in this type of activity, you are accepting the risk of possible injury or even death. Even the best bike will not help you land a clean trick if you lack the skills. Even the best protective gear will not guarantee complete safety. Remember that in this kind of riding, you can only trust your own abilities and you must accept the inherent risk. While riding you can reach significant speeds and therefore face significant hazards and risks. Inspect your bicycle and equipment carefully and be sure that it is in perfect condition before each ride. If possible consult with area site personnel, expert riders and race officials on conditions and equipment advisable. Always wear appropriate safety gear, including an approved full face helmet, full finger gloves, body armour, bright, visible clothing that is not so loose that it can be tangled in the bicycle or objects at the side of the road or trail, shoes that will stay on your feet and will grip the pedals (make sure that shoe laces cannot get into moving parts, and never ride barefoot or in sandals). Always use protective eyewear, to protect against dirt, dust and bugs.

WARNING: Some of the service procedures require specialist tools and good mechanical skills. Therefore, to minimize the risk of serious or even fatal accidents, maintenance and assembly work on your bike should be carried out by an authorized bicycle workshop.

IMPORTANT NOTICE: This manual is not intended as a comprehensive use, service, repair or maintenance manual. Please consult your dealer for advice and your dealer may also be able to refer you to classes, clinics or books on bicycle use, service, repair or maintenance.

WARNING: The frame box contains instructions for components made by third parties. You must study these carefully and follow the directions before riding your bike. Make sure you read and follow the suspension set up and service instruction manual provided by the manufacturer. If the instruction manual has not been provided, please contact your dealer or the manufacturer.

WARNING: Failure to maintain, check and properly adjust the suspension system may cause suspension malfunction, in result of which you may lose control and fall.

WARNING: Introducing changes in the suspension adjustment can alter the handling and braking characteristics of your bicycle. It is forbidden to change the suspension adjustment unless you are thoroughly familiar with the suspension system manufacturer's instructions and recommendations; you should always check for changes in the handling and braking characteristics of the bicycle after the suspension has been adjusted by taking a careful test ride in a safe area.

WARNING: As with all mechanical components, the frame is subjected to wear and high stresses. Different materials and components may react to wear or stress fatigue in different ways. If the design life of a component has been exceeded, it may suddenly fail possibly causing injuries to rider. Any form of crack, scratches or change of colour in highly stressed areas indicate that the life of the component has been reached and it should be replaced.



ATTENTION: When using the Soda EVD frame in the long travel setting (that is when shock bolts inside rocker arm are in the upper hole) the adapter in the dropout must be set to long chain stay position! The frame will not work with long travel and short chainstay setup. Trying to use the frame anyway with this incorrect setting can damage the frame or result in serious accidents!!!

GENERAL RIDING INFORMATION

Riding a bicycle can be dangerous. You must keep this in mind and be cautious at all times.

See and be seen. Use lights and reflective clothing in low light conditions.

Always wear a helmet when riding. It can save your life.

Always conduct a pre-ride check (detailed information can be found further in this manual).

Never ride the bicycle if you observe any technical problems or have any doubts about the proper functioning of any elements in the bicycle.

Keep the bike clean and well maintained.

Carry a pump, spare inner tube, patch kit, and a basic tool kit - you may need this in the case of a flat tire or other common mechanical problem that is usually easy to fix if you have the right tools. Ask your dealer for advice on this issue.

If your bicycle is equipped with gears, you can choose a gear combination that is most comfortable for the riding conditions. Gears will allow you to maintain a constant rate of pedaling. Use lower gears for going uphill and higher gears for going downhill. Ease up on your pedaling pressure when you shift gears. Ask your dealer to give you more advice on this issue.

Be careful with the brakes - they can be powerful and if activated too aggressively, may cause a crash. You should spend some time to get a better feel of the brakes on a side road or empty parking lot before the first ride. Avoid riding too fast, especially downhill. It is easy to lose control of the bicycle and crash at high speeds, and also you will find it very difficult to slow down especially if the hill is steep.

If your bike has been equipped with suspension, the increased speed you may develop will also increase the risk of injury. For example, front of the bike may dive on the suspension fork while hard braking. You can easily lose control and fall if you are not prepared for this. Please, learn how to operate your suspension system safely.

Thanks to the suspension the wheels can follow the terrain better, which improves control and comfort. This improved capacity may provide opportunity for riding faster, but you should be careful not to mistake the enhanced capabilities of the bicycle for your own riding skills. Improving skills takes time and practice.

Protect your bike from theft. Purchase a lock and never leave your bike unlocked while unattended, even if you are planning to be away from it for just a few minutes.



INTRODUCTION

When we stepped into the full suspension scene a few years ago, we were promised ourselves that right from the start, our products in this category would be just as solid, reliable and fun to ride as everything else that we had been making. In fact, that is why it took so long to launch our first full suspension frame. But it payed off, and we are proud to say that now, after a few years on the market, the Soda has proved itself in the real world. Both the Soda and Soda Slope have been thrashed by world-class riders such as 2013 FMB World Champion Sam Pilgrim. But that's only part of the success. What really makes us happy is seeing normal riders using this frame on a day-to-day basis and enjoying years of heavy-duty, trouble-free use. It seems like our aim has been accomplished and we hope that you will be just as happy with your Soda as we are! Have fun!

OVERVIEW OF PRODUCT LINE



soda EVO frameset, available with coil or air shock
 category: freeride / bike park
 hype: the do-it-all frameset that can be built into anything from a short travel jump bike to a mini dh machine



soda SLOPE frameset, available with air shock
 category: slopestyle / dirt jumping / bike park
 hype: radical bike for big moves, takes over where dirt jumping hardtails are not enough



FRAME CONCEPT & INFORMATION: SODA EVO

After several years of serving as our basic workhorse, the popular Soda frameset has undergone a major revamp. Now it's compatible with 650B wheels, has a longer front end and slacker head angle for more stability. The main pivot has been raised for better pedalling and square bump absorption and the frame now has more travel (adjustable from 160 or 180mm). The frame has now evolved into a pure freeride / bike park bike which still keeps the traits that everyone loved in the older Soda's. That means it's still super tough, manoeuvrable, adjustable, and loves to fly.

The frame comes with adjustable chain stay length and adjustable travel to allow riders to change of the bike's character significantly. This bike is exceptionally nimble and manoeuvrable in short travel and short chain stay mode (note: chain stays are VERY short in this position, much shorter than most bikes on the market), and still stable at high speeds in long travel with long chain stays. The frame is also very torsionally stiff - not only can it handle all rotational tricks but it also feels great in fast corners where you can often feel other frames flexing.

In the rear end you will find a 4-bar linkage that gives several advantages:

- lateral stiffness of the rear end of the bike
- minimised side loads on the shock, eliminating excessive shock wear and friction
- an optimised shock rate curve.

For a DH / Big Mountain setup we suggest the following settings: 180mm single crown or 200mm double crown fork, coil shock, long travel and long chain stay settings.

For trick orientated riding we suggest the following setup: 160-170mm fork, air shock, short chain stay and short travel setting.
For highest pedalling efficiency we suggest the following setup: 160-170mm fork, air shock, long chain stay and short travel setting.
The frame has an option of external or internal cable routing.



FRAME CONCEPT & INFORMATION: SODA SLOPE

The Soda Slope is a radical bike for big moves that takes over where dirt jumping hardtails are not enough. Its most important feature is that it enables true single speed setups with no chain tensioners or standard derailleur / single front ring setups. The Slope is exceptionally nimble and manoeuvrable with one of the shortest chain stays we have ever seen on production full suspension bikes. It was designed to feel just like a Majesty dirt-jump frame but with a safety valve in the rear end for big hits and high speed runs. We also tested the Slope in a more traditional DH environment, and found that with a longer fork (around 160mm) it can actually ride downhill surprisingly well. Even though the travel is short, the quality of the ride is great. The frame is really very stiff torsionally - we have been throwing 180's and 360's for days on end and experienced absolutely no problems. The suspension won't hamper you - we bet you can pull off just about every street trick that you can do on your hardtail.

In the rear end you will find a 4-bar linkage that gives several advantages:

- lateral stiffness of the rear end of the bike
- minimised side loads on the shock, eliminating excessive shock wear and friction
- an optimised shock rate curve.

For 2016 the Soda Slope is fitted with a Rock Shox Monarch RL shock with custom tune. The lockout is a really nice feature, making this frame feel like a hardtail when jumping but will open up and save your butt on the biggest hits. It also means that you don't have to put crazy high pressure in the shock to get this characteristic, and can open the lockout if you want to ride some rough off-road sections.

Designed to run with air shocks and very little or even no sag for street / dirt, or with standard sag settings (around 25-30%) for a more conventional feel.



SAM
PILGRIM
/
SAALBACH
AUSTRIA

TECHNICAL SHEET: SODA EVO

160-180mm (6.3"-7") adjustable rear wheel travel
AL6061+AL6066 T6 custom formed and butted tubes
smooth 'double pass' welding in all critical areas
rear shock: 216x63mm (8.5x2.5"),
mounting hardware: front 22.2 x 8 mm, rear 32 x 8mm
internal or external cable guide option
head tube: fully integrated taper (IS42/IS52), length: 115mm
fits forks with standard 1-1/8" or tapered 1.5 - 1-1/8" steerer tubes
rear hub: 135x10mm bolt type or 135x12mm with thru axle (NS custom 12MM thru axle included)
IS-2000 disc brake mount, max rotor size: up to 200mm
BB: threaded 73mm with ISCG-05 mounts
biggest chainring: up to -38t
rear derailleur: removable hanger included
front derailleur: not compatible
seat post/clamp: 30.9mm / 34.9mm (clamp included)
max tire: 27.5 x 2.6"
weight (w/o shock): -3.35kg / 7.4lbs

GEOMETRY (with 180mm travel / 565mm fork):
top tube effective: M: 592mm (23.3") L: 610mm (24")
reach: M: 433mm L: 454mm
stack: M: 601mm L: 601mm
CS with 160mm short travel: short CS / long CS adjustable 422-438mm
CS with 180mm long travel: short CS / long CS adjustable 422-438mm
seat tube: M: 409mm (16"), L: 445mm (17.5")
head tube angle: 64°
seat tube angle (adjusted): 75°
bottom bracket height: -6mm
wheelbase M: 1192mm (short CS) 1208mm (long CS), L: 1212mm (short CS) 1228mm (long CS)

note on sizing: for jump-focused riders we recommend the M size for riders up to 180cm, and the L size for riders up to 190cm. However if you wish to adjust the the seat height for optimum pedalling, we recommended the M size for riders up to 177cm and the L size for riders up to 185cm.

* the adjusted seat tube angle is around 2.5° slacker than the actual angle due to specific seat tube shape and it's offset position; the adjusted seat tube angle show the equivalent for a traditional frame



TECHNICAL SHEET: SODA SLOPE

107mm (4.2") rear wheel travel
pivot around BB allowing true single speed setups
AL6061+AL6066 T6 custom formed and butted tubes
smooth 'double pass' welding in critical areas
weight (w/o shock): -3.05kg
rear shock: 190x50mm (7.5 x 2.0"): mounting hardware: front & rear 22.2 x 8 mm
head tube: fully integrated taper (IS42/IS52), length: 115mm
fits forks with standard 1-1/8" or tapered 1.5 - 1-1/8" steerer tubes
rear hub: 135x10mm, suggested bolt-on hubs
IS-2000 disc brake mount, max rotor size: up to 185mm
BB: threaded 73mm with ISCG-05 mounts
biggest chainring: up to -34t
rear derailleur: optional hanger included
front derailleur: not compatible
seat post/clamp: 30.9mm / 34.9mm (clamp included)
max tire: 26 x 2.4"

Geometry with 505mm axle to crown forks (-120mm travel):
top tube actual: 540mm (21.25"), effective: 551mm (21.7") reach: 418mm
stack: 560mm
chain stay min 390mm - 406mm
seat tube: 348mm (13.7")
head tube angle: 69°
seat tube angle effective: 76.5°*
bottom bracket height: +7mm
wheelbase (min): 1070mm (42.1")

* the actual seat tube angle is around 1.0° slacker than quoted due to specific seat tube shape and it's offset position; the numbers quoted show the equivalent for a traditional frame

Sizing information:

Like our hardtails, the Soda Slope comes in one size. This size fits most riders from around 168cm to 188cm.

REPLACEMENT PARTS: SODA EVO

Make yourself familiar with the names of all the main parts of the frame by studying the diagrams below:



Fig. 1 Soda EVO frame main parts

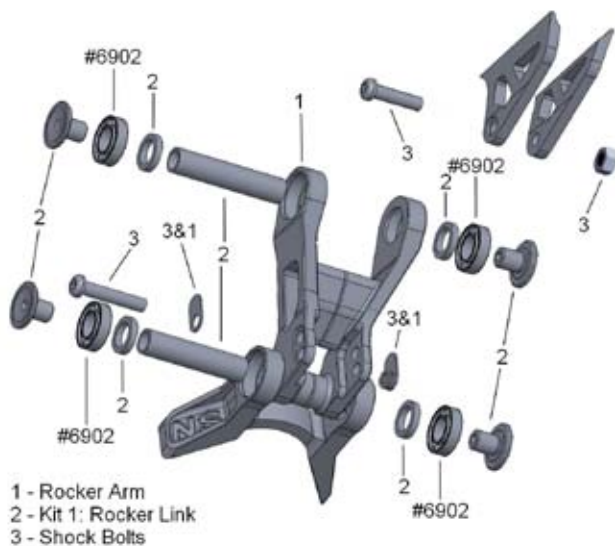


Fig. 2 Soda EVO frame rocker arm links details

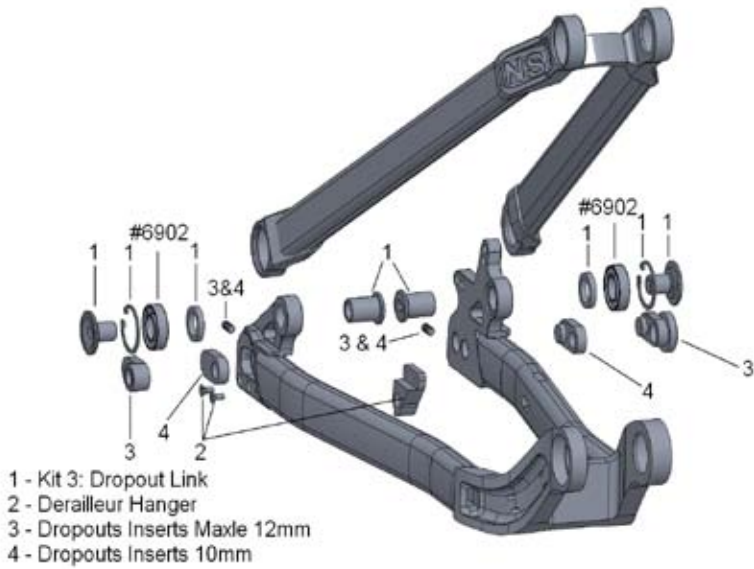


Fig. 3 Soda EVO frame dropouts / dropout link details

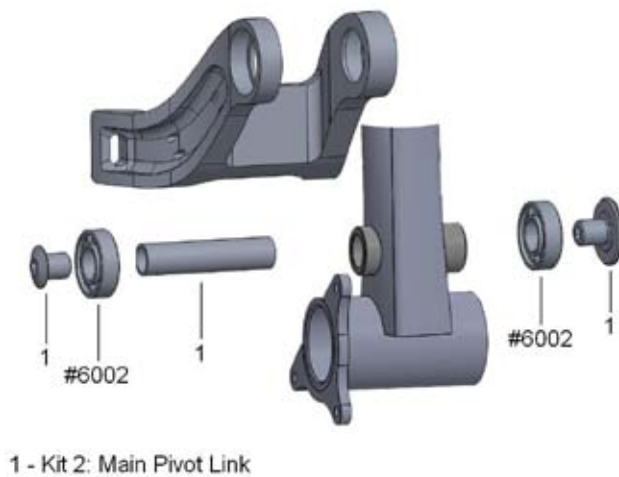


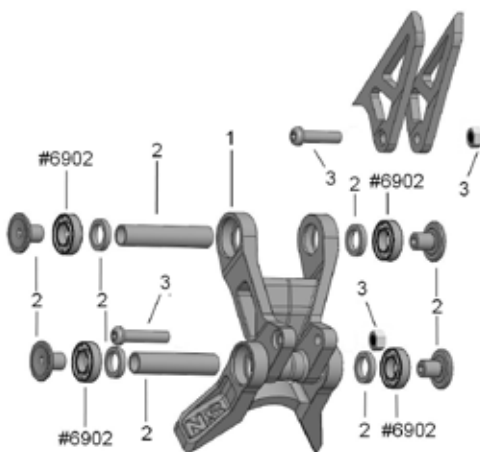
Fig. 4 Soda EVO frame main pivot link details

REPLACEMENT PARTS: SODA SLOPE

Make yourself familiar with the names of all the main parts of the frame by studying the diagram below:



Fig. 5 Soda Slope frame main parts



- 1 - Rocker Arm
- 2 - Kit 1: Rocker Link
- 3 - Shock Bolts

Fig. 6 Soda Slope frame rocker arm links details



INSTRUCTIONS: GENERAL INFO

Fork: The frames are designed to work with the following forks: Soda EVO : suspension forks 150-200 mm travel, Soda Slope: suspension forks with 80 - 160 mm travel.

Headset: Soda EVO & Soda Slope frames come with a fully integrated taper (IS42/IS52), length: 115mm. It fits forks with standard 1-1/8" steer tubes or tapered 1.5 - 1-1/8" steer tubes. Don't cut your steertube too low! The process of mounting headsets in the frame should be done by a qualified mechanic.

BB: The frames are designed to work with the following bottom bracket sizes: 73mm/113mm, or other 73mm wide BB with a chainline of approximately 51mm. The Soda Slope will accept bmx cranks with Euro BB. Most Euro BB's are designed with 68mm wide BB However they can be used but a 5mm spacer must be added to the central spacer between the BB bearings (same diameters as original central spacer). Before installation make sure that the BB is clean, lightly greased, free of dirt and paint. The installation process should be carried out according to the BB manufacturers instructions.

Chainring sizes: The frames are designed to work with the following chainrings: Soda EVO: up to 38t, Soda Slope: up to 34t. Max chainring size is only an approx reference. It can vary depending on the manufacturer, model, cranks & BB used.

Biggest tire: The frames will fit the following tires: Soda EVO: 27.5" x 2.6", Soda Slope: 26" x 2.3". Note that these numbers are for reference only as the size and shape of the tire can vary depending on the manufacturer and rim width.

Brake compatibility: Soda EVO / Soda Slope frames are disk brake compatible. Both frames come with International Standard IS-2000 disc brake mount. Both frames will fit discs up to 200mm.

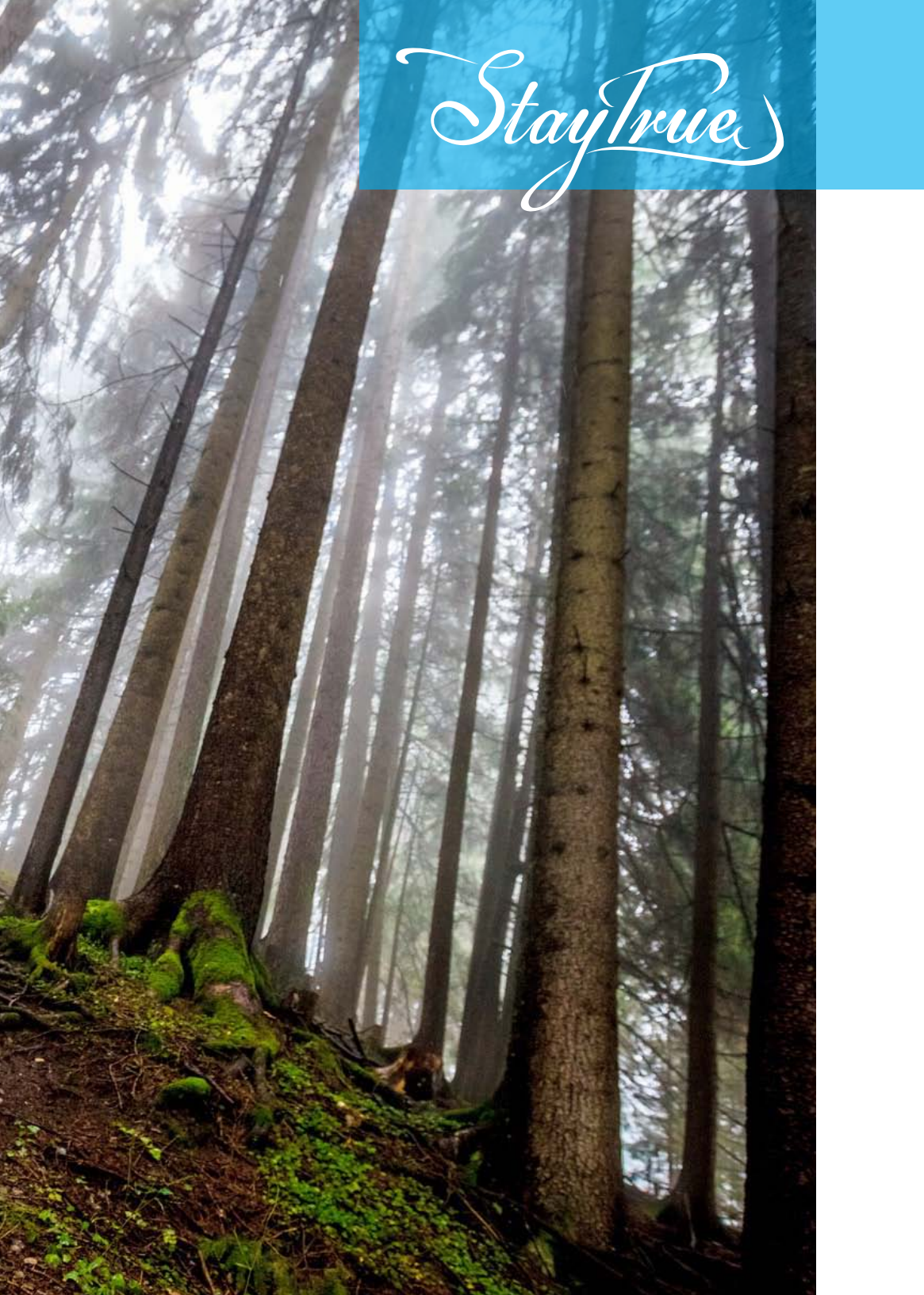
Seatpost & seatpost clamp: All Soda frames work with 30.9mm seatposts and 34.9mm seatclamp (included with the frame) Do not extend the seat post above the minimum insertion mark. Maximum seat insertion is about 280mm for Soda EVO and 230mm for Soda Slope.



**SODA EVO & SODA SLOPE
TECH MANUAL**



Stay True



SUSPENSION SETTINGS

Suspension settings are a matter of personal preference. Some riders like it plush, some like it firm. However here are some suggestions of shock settings that you can use as basic guidelines.

Coil shocks:

For rider weight of 70kg a 450 lbs spring will give a medium-soft ride in the long travel position (approximate sag 35%), and a firm setting in the short travel position (approximate sag: 28%).

For rider weight of 80kg a 450 lbs spring will give a very soft ride in the long travel position (approximately 38% sag) and a medium soft ride in the short travel position (aprox. 30% sag)

Air shocks:

*For rider weight of 80kg you will get
a sag of 33% (medium-soft) at 160psi in short travel mode
a sag of 28% (medium-firm) at 170psi in short travel mode
a sag of 33% (medium-soft) at 190psi in long travel mode
a sag of 28% (medium-firm) at 200psi in long travel mode*

Play around with the air pressure and spring weights until you find a setting that suits you best. Remember that the shock in the long travel setting will always require a firmer spring (or more air pressure) to achieve the same percentage of sag as the shock had in the short travel setting.



INSTRUCTIONS: SODA EVO REAR WHEEL MOUNTING

Soda EVO frame are compatible with both 135x10 bolt-on hubs with female oversized axle + side bolts or 135x12 hubs. Two sets of dropouts inserts are included with the frame: 135x10, 135x12. NS 135x12 axle is also included with the frame. ATTENTION: 135x10 or 135x12 hubs with longer thru axle + side nuts and hubs with 135x10 standard Q-R wont fit !!

For proper dropout inserts installation and chainstay length adjustment please refer first to: # INSTRUCTIONS: SODA EVO CS LENGTH ADJUST

Mounting the rear wheel:

- Loosen the bolts on the disc brake calliper and slide the rear wheel into the dropouts (hub side bolts / Maxle axle should be removed from the hub), then mount the chain on the chainrings.
- Align the wheel.
- Mount the 135x10 bolts or 135x12 axle and tighten according to hub manufacturers instructions (just before this, make sure the wheel is positioned symmetrically in the stays).
- Adjust the position of the disc brake caliper so that it does not interfere with the disc but at the same time make sure that it will use the maximum area of the brake pads when the brake is applied.

Wheel removal:

To remove the wheel just loosen the hub bolts or 12mm axle and the wheel will come out of the frame.



BARTEK KRZYSZTON
"JAWS"
SUPERNATURAL
SESSION

INSTRUCTIONS: SODA EVO CS LENGTH ADJUST

Choosing correct dropout inserts set:

- For 135x10 bolt-on hubs use dropout inserts with 10mm holes there are no difference between left and right inserts.
- For 135x12 hubs use dropouts inserts with 12mm holes: the smaller insert with tread inside is for the drive (right) side dropout. (see Fig.9) The bigger insert w/o thread inside is for the non-drive (left) side.

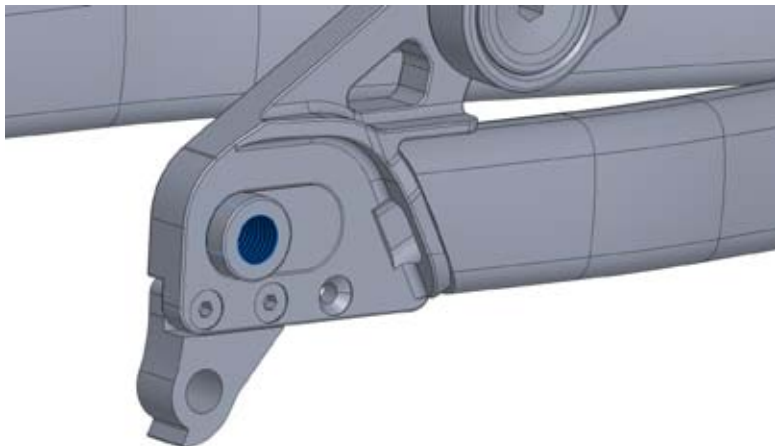


Fig. 9 135x12 dropout inserts - right side with thread inside

Adjusting CS length:

- Make sure to start by this procedure by un-tightening the insert securing set screws (in the back part of the dropouts). Do not remove them completely to avoid loosing them! (Fig. 10)
- Put the correct dropout inserts into the frame 135x10 or 135x12. They should be pushed into the frame until they are flush with the surface of the dropout.
- Tighten the securing screws (in the back part of the dropouts) immobilizing the dropouts inserts. Do not over tighten!

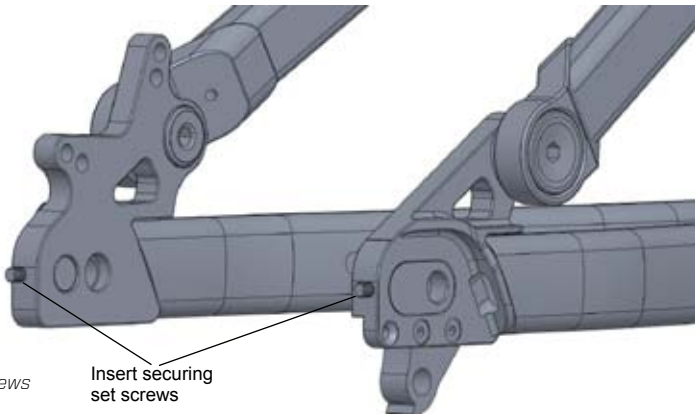


Fig. 10 Insert securing set screws

Adjusting derailleur hanger and disk brakes:

Note that short and long chainstay positions have corresponding positions for derailleur hanger. The drawings below explain how they should be mounted.

Fig. 11 Shows dropouts inserts in the long CS setting (please notice correct derailleur hanger setup)

Fig. 12 Shows dropouts inserts in the short CS setting (please notice correct derailleur hanger setup)

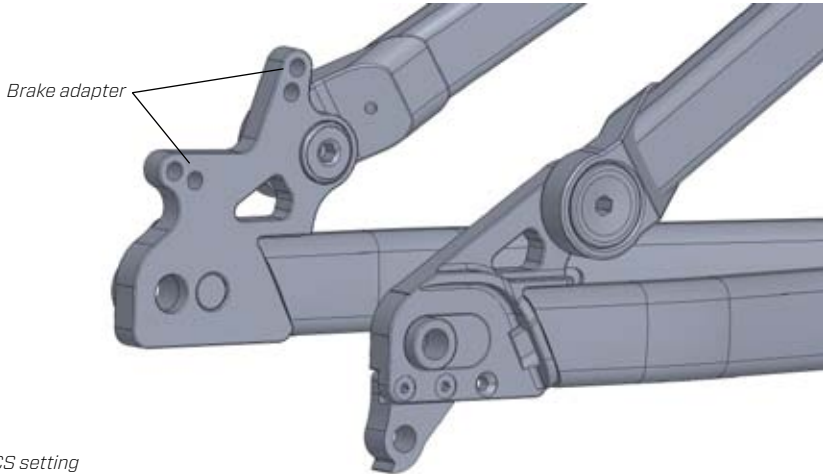


Fig. 11 Long CS setting

- * always set the same CS length for both sides!
 - * always set derailleur hanger in proper position referring to CS length!
 - * always use threaded 135x12 dropout insert in the drive side (right) dropout!
 - * Soda EVO frame comes with 135x12mm NS thru axle, optionally Rock Shox Maxle 135x12mm could be used.
 - * always set long CS for long travel setup. frame will not work with long travel and short CS setup.
- Trying to use the frame anyway with this incorrect setting can damage the frame or result in fatal accidents!!!*

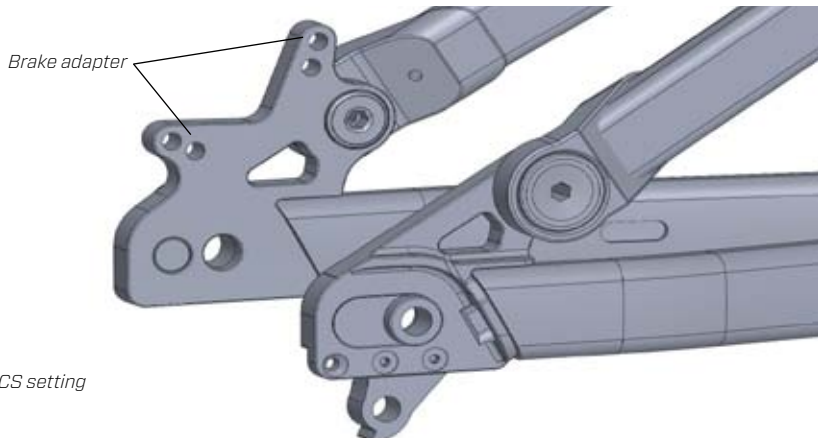


Fig. 12 Short CS setting

INSTRUCTIONS: SODA SLOPE REAR WHEEL MOUNTING

TIP: for frames with horizontal dropouts & single speed we always suggest bolt on hubs or hubs with thru axles and track nuts. This way you can get much more clamping force than with any QR hub. Most riders don't even use the axle positioners / chain tensioners when running bolt on hubs.

Mounting the rear wheel:

- Loosen the bolts on the disc brake caliper and slide the rear wheel into the dropouts (track nuts / bolts should be removed from the axle), then mount the chain on the chainrings.
- Align the wheel so that the chain becomes tight.
- Mount the bolts and tighten according to hub manufacturers instructions (just before this, make sure the wheel is positioned symmetrically in the stays)
- Adjust the position of the disc brake caliper so that it does not interfere with the disc but at the same time make sure that it will use the maximum area of the brake pads when the brake is applied



**BARTEK KRZYSZTOŃ
"JAWS"**

INSTRUCTIONS: SODA EVO TRAVEL ADJUST

Fig 13 shows the long travel position (shock bolts inside rocker arm in upper hole) Note that in this setup the dropout inserts must be set to the long chainstay position! The frame will not work with long travel and short chainstay setup. Trying to use the frame anyway with this incorrect setting can damage the frame or result in fatal accidents!!!

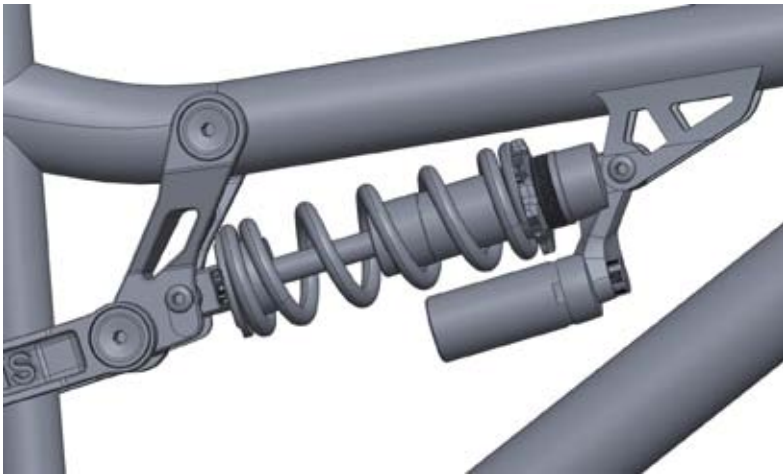


Fig 13. Long travel position

Fig 14 shows the short travel position (shock bolts inside rocker arm in lower hole). In this setup you can use the long or short chainstay position in the dropouts.

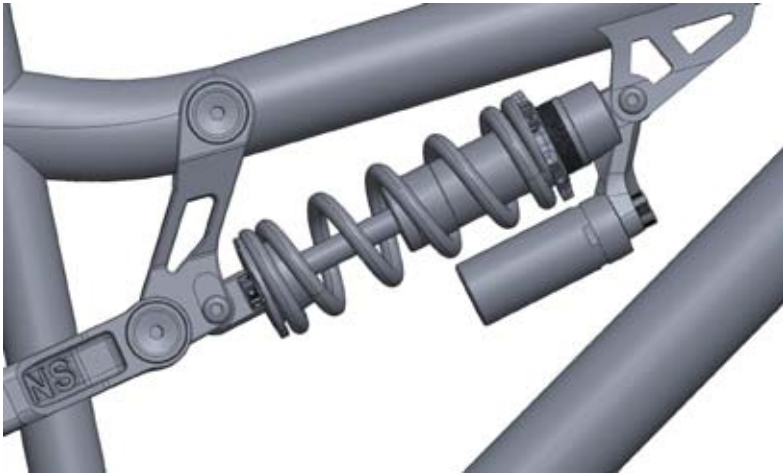


Fig 14. Short travel position

Changing the travel:
-unscrew the shock mounting bolt in the rocker
(use a 6mm allen key),
-remove bolt
-rotate rocker inserts / washers,

-move shock to another hole in the rocker arm,
-install bolt again,
-tighten to proper force.

INSTRUCTIONS: SODA SLOPE BB ASSEMBLY

The Soda Slope frame comes with the main pivot around the BB to allow real singlespeed setups. In order to assemble the swingarm and cancel play in the assembly:

- insert bearings into frame with the spacer between them (if removed) or check if bearings are pressed and sit well inside the frame and the spacer is straight
- slide CS yoke into place
- install BB shell paying attention to the position of the blocking tooth (fig. 15)
- install 2.5mm bb spacer (or bb mounted chain tensioner) under the drive side bb cup
- tighten drive side BB cup till play/slack on CS disappear
- tighten compressing bolts slightly (to 4 NM)
- tighten both BB cups to specific torque
- tighten compressing bolts to specific torque (to 6-8NM)

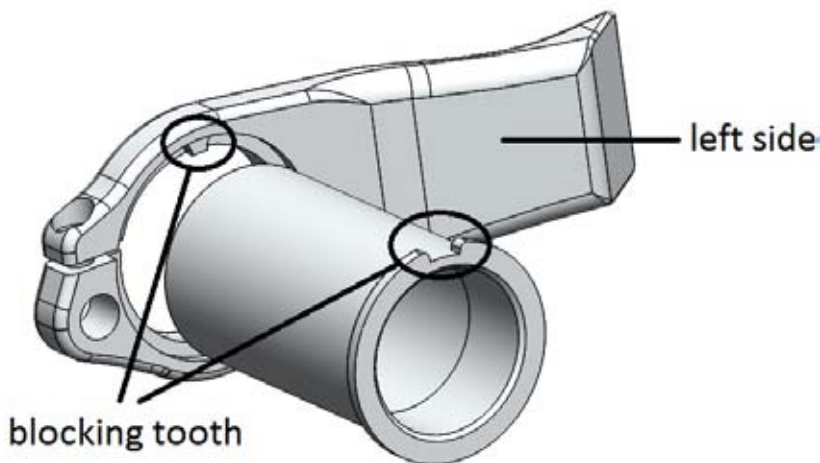


Fig 15. BB shell with cut and chainstay yoke with blocking tooth

MACIEK KUCBORA
NS PRODUCT DEVELOPER
SAN REMO, ITALY



INSTRUCTIONS: SODA EVO/ SODA SLOPE EXTERNAL CABLE ROUTING

Cables should be attached under the top tube, between the shock mounts, over the shock, over the rocker arm then on the inside part of the chainstays (as on Fig. 16). In case of hydraulic brakes the rocker arm needs to be disassembled from top tube and cable put over rocker arm and under top tube (see Fig. 17). In case of mechanical brake there is no need to disassemble rocker arm. Disassemble rocker arm using using a 2x6mm allen key. Make sure you don't loose washers that are mounted between toptube and rocker.



Fig 16. Soda EVO / Soda Slope external cable routing



Fig 17. Rocker arm disassembled from top tube (hydraulic brakes)

Please use small zip-ties to attach brake cable to the cableguides (we do not suggest click-on clips)

INSTRUCTIONS: SODA EVO INTERNAL CABLE ROUTING

The Soda EVO frame has an option of running the cables inside the frame.

In order to avoid damage of the cables we added protective tubes to the frame.

Cable installation procedure:

- For this process you will need to disassemble the brake hose and / or derailleur cable.
- Insert the cable and / or hose into the down tube. The cables coming from the left side of the handlebar should enter the right hole, and the cables coming from the right side should enter the left hole.
- When cable will reach bottom down tube hole use bent steel wire or grasper to pull it out of the tube.





- Make sure derailleurs cable exits the downtube on the drive-side, and the brake cable exits from the downtube on the non-drive side. Use included cable housing to protect this area on both sides (Fig. 18). Insert the cables into the chainstays yoke. Adjust the position of the cable housing protector so both it's ends enter the DT & CS yoke evenly. Use a zip-tie on the drive side to make sure the derailleurs cable doesn't get caught on the chainrings.



Fig. 18. Internal cable routing in DT/BB / CS yoke area. Cable housing protector.

-derailleurs cable exits on the end of chainstays near right dropout and goes to the derailleurs (Fig. 19)



Fig. 19 Internal cable routing for rear derailleurs

- brake cable exits on the inside surface of the CS and goes to the brake caliper (Fig. 20)



Fig. 20 Internal cable routing for rear disk brake

TIGHTENING TORQUE

Correct tightening force on fasteners, nuts, bolts, screws on your bicycle is crucial. Too little force, and the fastener may not hold securely. Too much force, and the fastener can strip threads, stretch, deform or break. Either way, incorrect tightening force can result in component failure, which can cause you to lose control and fall. If any problems are found during the pre-ride check you should immediately seek professional advice from a bicycle mechanic. See also the manuals of the suppliers of the suspension fork, rear shock, and other parts that come with this frame. Do not ride the bicycle until all problems have been resolved. Riding a bicycle with any defects can be a hazard to your health and life!

Unless you are every competent cyclist and mechanic, do not attempt to execute any of these adjustments yourself. Seek advice at your local bicycle shop. The rear suspension bolts (rear shock and pivots) have been tightened in the factory with specific torque. In case of re-adjustment extreme care should be taken when re-tightening them.

Tightening torque for various bolts on the frame:

Soda EVO / Soda Slope Shock bolts:	10 Nm (6mm allen key)
Soda EVO / Soda Slope Suspension Pivots:	12-13 Nm (2x 6mm allen key)
Soda EVO derailleur hanger	3-4 Nm (do not overtighten!) (3mm allen key)
Soda EVO dropout blocking screws:	2-3 Nm (do not overtighten!) (2.5mm allen key)
Soda Slope BB tightening bolts:	6-8 Nm (4mm allen key)

For the following parts please first refer to manufacturer instructions. The following values are given for reference only:

Soda EVO 135x10 rear hub bolt:	20-25Nm (6mm / 8mm allen key)
Soda EVO 135x12 NS thru axle:	10Nm / security bolt 2-3Nm
Soda 135x12 Maxle rear hub quick-release axle:	follow Rock Shox instructions
Soda Slope 135x10mm bolt-on hubs:	29-35Nm
Soda EVO / Soda Slope rear derailleur bolt	9 Nm
MTB crank to bottom bracket bolts:	40 Nm (or according to manufacturer instructions)
3pcs cranks to bottom bracket bolts:	12Nm, then pinch bolts (if used)-12Nm
Bolts in seat post clamp: :	M5: 10Nm, M6: 12Nm

MAINTENANCE & PERIODICAL SAFETY CHECKS

DO NOT RIDE THE BICYCLE IF IT YOU SEE ANY DEFECTS.

Take care of your frame and you will enjoy it for a longer time. Before every ride you should always make a pre-ride check. It should include the following points: clean the frame (note that high-pressure washing may cause damage to some components on the bicycle so it should be avoided if possible) and examine it CAREFULLY for any indications of potential failures including cracks, corrosion, dents, paint peeling and any other indications of potential problems, inappropriate use or abuse. If anything suspicious is found, contact your local bike dealer for a proper inspection. These are important safety checks and very important to help prevent accidents, injury and shortened product lifespan.

Things to check before each ride:

- all frame bolts are correctly tightened – refer to # TIGHTENING TORQUE
- wheel to frame & fork connections - this is critical for your safety. If you have axle bolts they should be tightened according to the manufacturer's specification. If you have a quick release make sure that it is set to the CLOSED position, and that there is a reasonable amount of resistance applied.
- steering system. The steering system includes: handle bar, stem, headset and fork. All elements should be connected firmly for riding safety. If you wish to make any adjustments yourself, be warned that incorrect setup can be very dangerous and we always advise you to seek professional advice for this! Check headset looseness, check stem to handlebar connection and stem to steertube connection. Check the connection between the handlebars and stem. Try pushing the handlebars up and down - there should be no movement between these two elements. Check the headset for eventual free play (stand next to the bicycle, apply the front brake and push forwards and backwards. There should be no play between the frame and fork). If any play is found contact your local bike shop. Do not attempt to make any adjustments yourself. If you are confident that you can do this yourself then adjust the steering system according to the headset/stem manufacturer instructions. All parts of the stem should be regularly checked for damage or cracks. If you find anything suspicious, contact an experienced bike mechanic immediately. A defective steering system can cause serious injury or death.
- bottom bracket connection to the frame. There should be no play between the frame and bottom bracket.
- the connection between the cranks and bottom bracket.
- the connection of the pedals to the cranks.
- chain line and chain tension.
- derailleur connection with the frame and make sure the function is proper before every ride.
- brake clamp to frame & fork connection.



- the general condition of rear shock and front fork (take special note of any cracks or deformations).

- shock / fork pressure (for air shocks). Refer to the # SUSPENSION SETTINGS and manufacturers instruction. Make sure the SAG doesn't exceed the reasonable limit. Make sure the air pressure does not exceed limits provided by shock / fork manufacturer

- clean rear shock & forks stanchion tubes.

- brake cables and their housing for kinks, rust, broken strands or frayed ends. If you notice any damage, you should ask a bicycle shop to replace the cables immediately. Damaged cables can seriously impede braking efficiency.

For information about servicing the shock and other parts like the headset mounted on the bike it is necessary to follow manufacturers instructions closely. The user manual for the additional parts are supplied in the frame box.

BOX CONTENTS: SODA EVO

- Soda EVO frame
- seatpost clamp
- Shock mount bolts (2pcs)
- Dropout inserts 10mm (L+R)*
- Dropout inserts 12mm (L+R)
- 135x12mm NS thru axle
- Derailleur hanger (with 2 bolts)
- Internal cableguide kit
- Zipties for cable routing
- Instruction

*Only for aftermarket frame

BOX CONTENTS: SODA SLOPE

- Soda Slope frame
- seatpost clamp
- Shock mount bolts (2pcs)
- Derailleur hanger*
- Zipties for cable routing
- Instruction



**SAALBACH
AUSTRIA**



Frame model :

Frame serial number :

Shock serial number (if any) :

Price :

Date of purchase :

I certify that I am acquainted with the actual specification of the bicycle (this can be slightly different than that published by the distributor).

Buyer's signature :

Dealer's signature :

PROOF OF PURCHASE - WARRANTY CARD



Dealer's stamp



NS BIKES WARRANTY

1. 7ANNA sp. z o.o. sp. k. (hereinafter on referred to as 7ANNA), manufacturer of NS Bikes, warrants all new full suspension frames for a period of 3 years.

2. If any defects are noticed in the product, the Customer must stop using it immediately and should report this to the dealer that sold it within 14 days. Using a damaged product will void the warranty, lead to more extensive damage and may pose a serious hazard to the rider's health and life.

3. The warranty period starts from the day when the product is purchased. This purchase must be documented with the cash receipt for all products plus a filled in warranty card for frames (which includes the following information: date of purchase, serial number of frame, customers name and name of dealer).

4. The warranty applies only to the original owner and is not transferable.

5. Claims under this warranty should be made through the dealer where the product was purchased.

6. The warranty is valid only if the component is sold by an authorized dealer and assembled by a qualified bicycle mechanic.

7. The warranty does not cover:

- normal wear and tear
- bearings
- labour charges for replacing parts,
- paint and decals,
- problems that result from excessive loads occurring during extreme riding or from bad riding technique,
- problems that result from incorrect assembly or installation.
- cost of travel or shipment to and from an authorized dealer such cost, if any, shall be borne by the original owner

8. This warranty is void if:

- the warranty card is filled in incorrectly or incompletely,
- any modifications have been made to the product by the customer,
- damage has been caused by external parts that have been incorrectly assembled on the frame,
- the product had not been used, maintained or repaired according the manufacturers instructions,
- the product was transferred to any third party.

9. Directions on how to deal with warranty cases shall be provided by the distributor of the product in the region where it was purchased.

10. The crash replacement warranty covers damage resulting from crashing, or excessive loads generated by things like casing jumps or throwing the bike. Such damage won't be covered by the normal warranty, however 7ANNA offers the possibility to replace the product for 50% of the original suggested retail price under the Crash Replacement policy.

The conditions for this are:

- Crash Replacement applies to NS full suspension frames for a period of 3 years from the date of purchase.
- 7ANNA reserves the right to deny Crash Replacement without further explanations,
- Crash Replacement does not apply to parts damaged in other situations than in riding (for example Crash Replacement will not cover a part that has been damaged during shipping),
- Crash Replacement only applies to components made by 7ANNA.

11. This limited warranty does provide the original owner with certain legal rights and recourse and the original owner may possess other rights or recourse, depending on the state, jurisdiction, country, or province. Please be informed that this is a final statement of the 7ANNA and all the remedies available to the original owner are stated herein. 7ANNA does not allow or authorise any entity (including authorised dealers) to extend any other express or implied warranties on its behalf. An original owner agrees that 7ANNA's liability under this warranty under no circumstances shall be greater than the original purchase price. In no event shall 7ANNA be liable for incidental or consequential damages. All other remedies, obligations, liabilities, rights, warranties, express or implied, arising from law or otherwise, including (but not limited to) any claimed implied warranty of merchantability, any claimed implied warranty arising from course of performance, course of dealing or usage of trade, and any claimed implied warranty of fitness, are disclaimed by 7ANNA and waived by the original owner. Some states, jurisdictions, countries, and provinces do not allow some or all of the limitations set forth herein, or the exclusion or limitation of incidental or consequential damages. If any provision is found unenforceable, only that provision shall be stricken and all others shall apply.

manufactured by: 7anna sp. z o.o. sp. k., Raciborskiego 123, 80-215 Gdansk, POLAND
tel +48 520 18 04 / mobile + 48 533 01 90 80

Always wear a helmet when riding. It will not make you deathproof, but will increase your chances to avoid serious injury if you crash (and you WILL crash). A broken leg can be fixed. A broken brain cannot! Even if you see some of our riders without a helmet, it's only because they are complete idiots!

NS
BIKES

soda

WWW.NSBIKES.COM
INFO@NSBIKES.COM